

FOLLOW-UP OF THE FATE OF OUR PRE-DIALYSIS PATIENTS BETWEEN 2009 AND 2015

Krisztina Varsanyi¹, Dalma Kulcsar¹, Iren Szakacs¹, Imre Kulcsar^{1,2}

¹ B. Braun Avitum Hungary ePlc. Dialysis Centre No. 6, Szombathely,
² Markusovszky Teaching Hospital, Szombathely

INTRODUCTION

The number of patients with advanced chronic kidney disease increases from year to year.

PATIENTS, METHOD

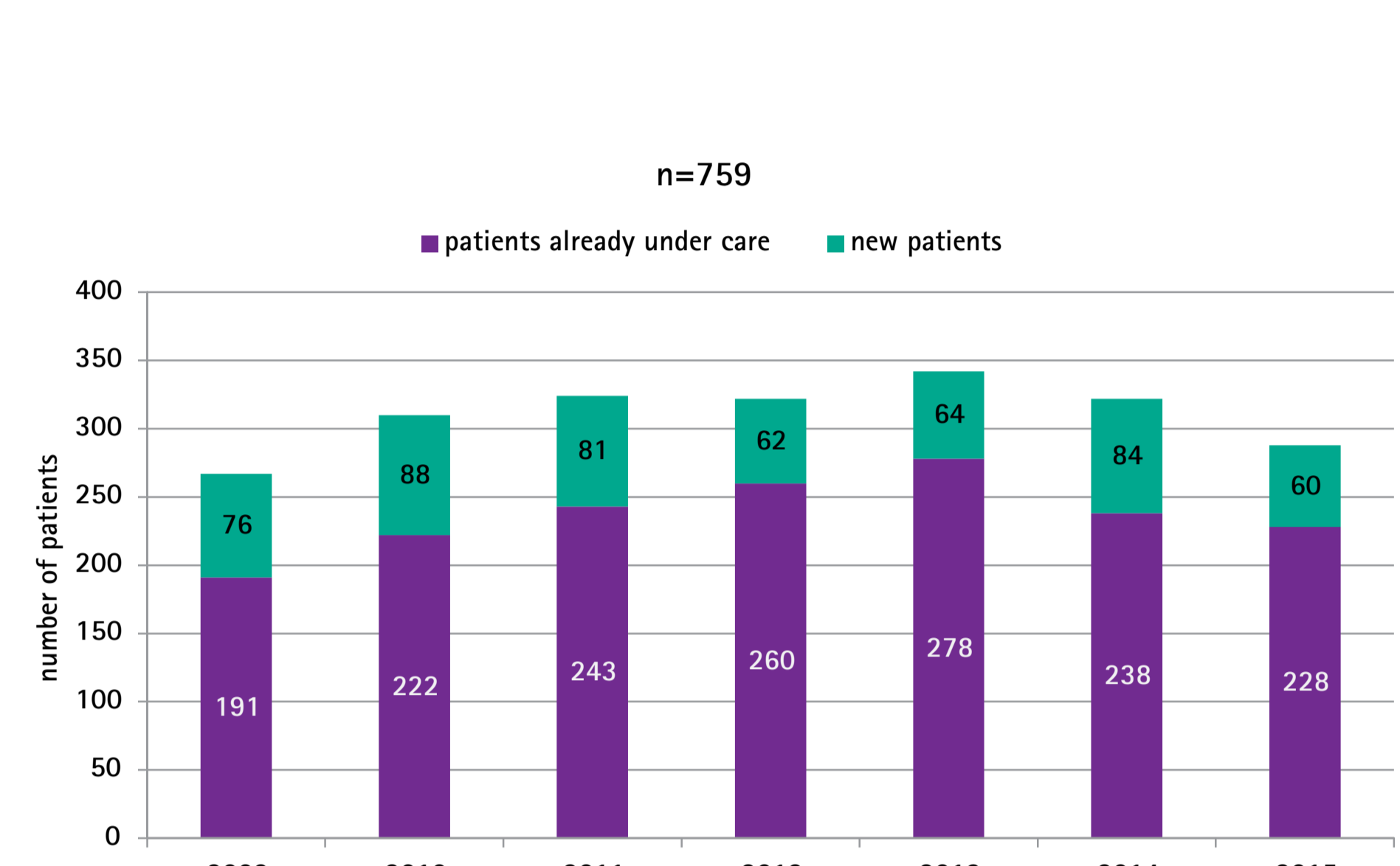
In the period of study, our outpatient clinic for nephrology was visited by a total of 759 patients with GFR values below 20 mL/min/1.73m², i.e. suffering from chronic kidney disease (CKD) stage 4 or 5. The fate of these patients entering the predialysis stage was monitored from 2009 up to the end of 2015.

RESULTS

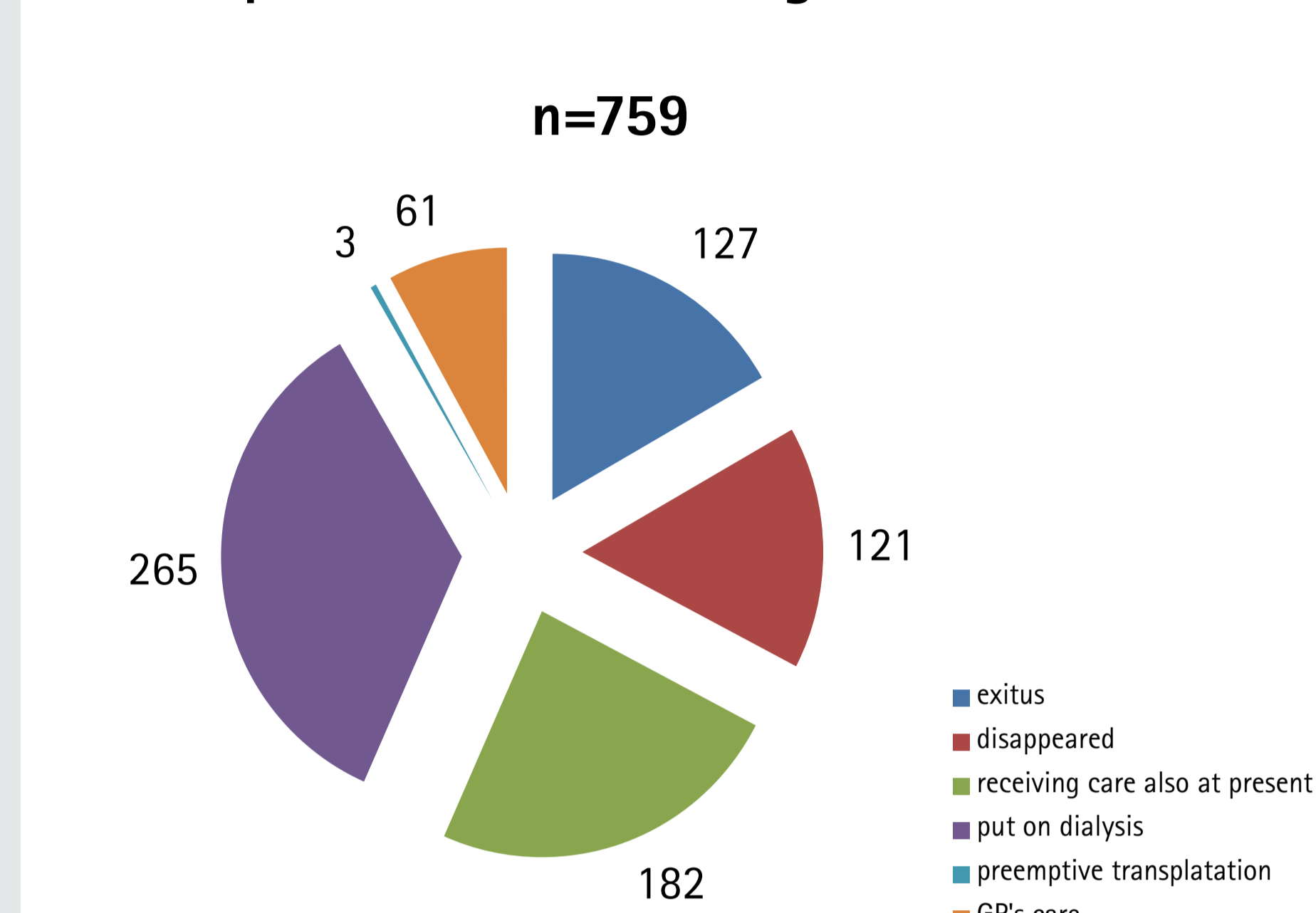
Our CKD stage 4–5 patients under outpatient nephrological care between 2009–2015

	all patients 759 pts	≤ 65 years 247 pts 32.5%	> 65 years 512 pts 67.5%
average age at the start of care (years)	69.1±13.9	51.7±11.0	76.4±6.6
average age at the time of study or drop-out (years)	72.5±13.5	56.4±11.5	79.5±6.7
average length of care time up to 31 December 2014 or to the drop out date (years)	3.6±2.9	4.7±5.4	3.0±2.9
starting GFR (mL/min/1.73m ²)	19.5±6.4	16.3±3.8	17.0±3.5
closing GFR (mL/min/1.73m ²)	19.2±7.8	17.3±12.5	18.6±8.2

Number of patients receiving care with a GFR <20 mL/min/1.73 m² 2009–2015



Fate of patients with CKD stage 4–5



Died patients n=127 (16.7%)

	all died patients 127 pts	≤ 65 years 18 pts 14.0%	> 65 years 109 pts 86%
average age at the start of care (years)	74.1±10.3	54.4±12.3	77.3±6.2
average age at drop out (years)	77.3±10.3	56.5±12.8	80.8±5.9
average length of care time (years)	3.3±3.1	2.1±1.8	3.4±3.1
starting GFR (mL/min/1.73m ²)	18.5±4.4	17.0±4.8	18.7±4.5
closing GFR (mL/min/1.73m ²)	18.6±7.1	17.0±7.4	18.9±7.2

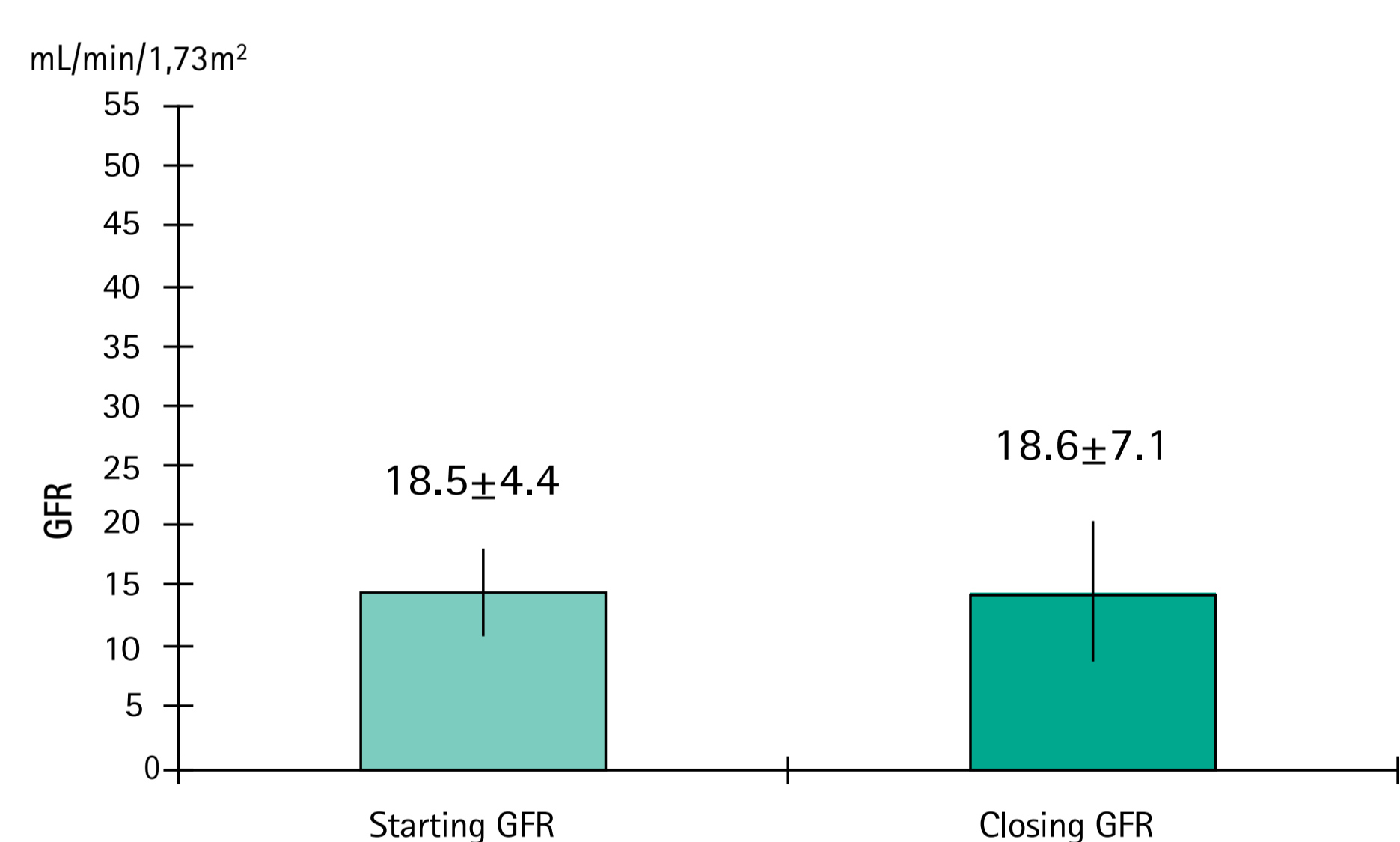
"Disappeared" patients n=121 (15.9%)

	all disappeared patients 121 pts	≤ 65 years 26 pts 21.5%	> 65 years 95 pts 78.5%
average age at the start of care (years)	73.9±12.0	54.9±9.2	79.2±6.4
average age at drop out (years)	77.4±11.2	59.9±8.1	82.1±6.3
average length of care time (years)	3.5±4.2	5.0±4.8	2.9±2.3
starting GFR (mL/min/1.73m ²)	17.8±4.4	16.8±3.1	17.2±3.1
closing GFR (mL/min/1.73m ²)	14.8±3.6	21.1±16.2	18.9±8.7

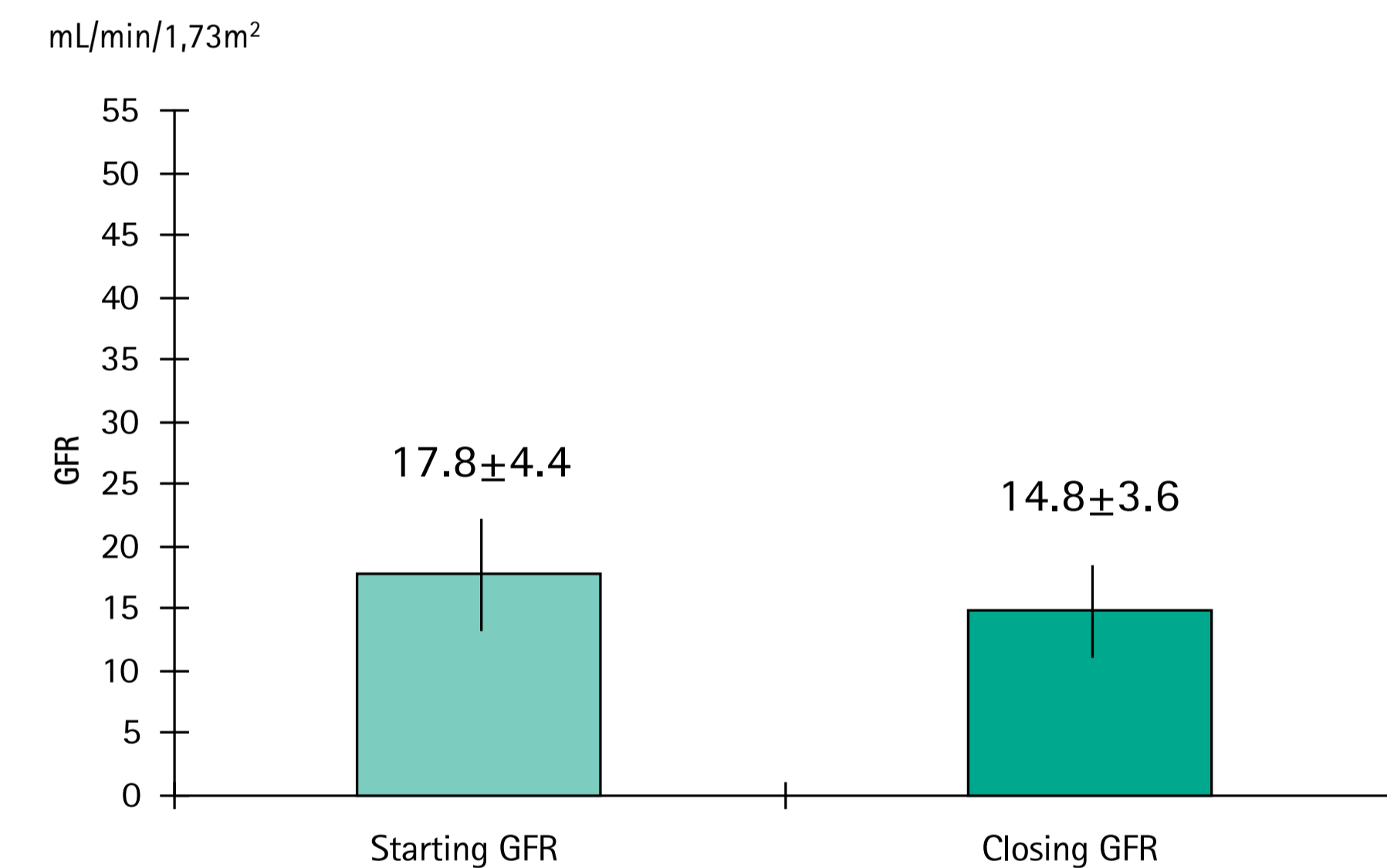
Back to the GP's care n=61 (8.0%)

average age at the start of care (years)	72.3±10.8
average age at drop out (years)	76.1±10.5
average length of care time (years)	3.8±2.2
starting GFR (mL/min/1.73m ²)	18.7±5.1
closing GFR (mL/min/1.73m ²)	39.7±13.6

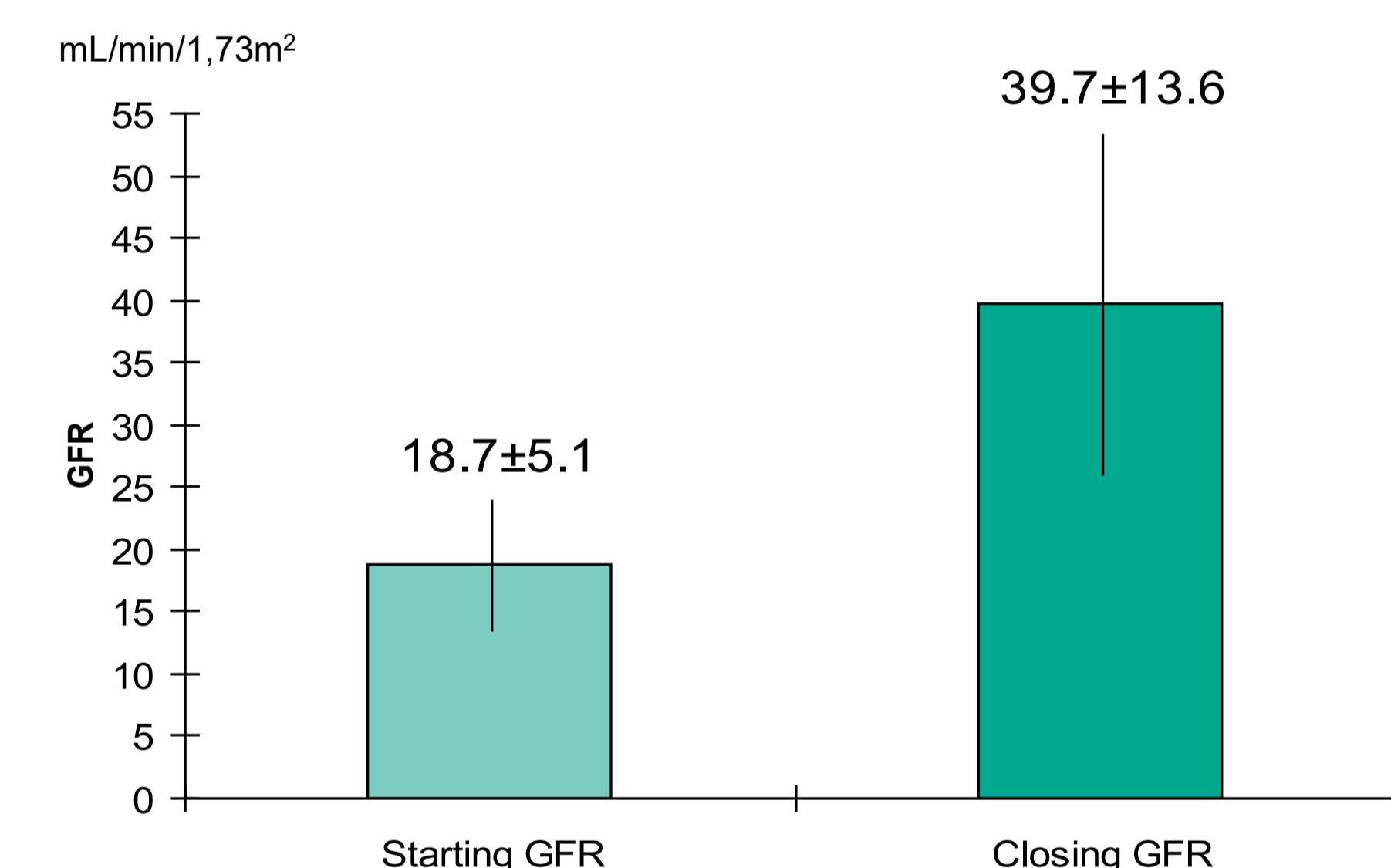
Changes in GFR



Changes in GFR



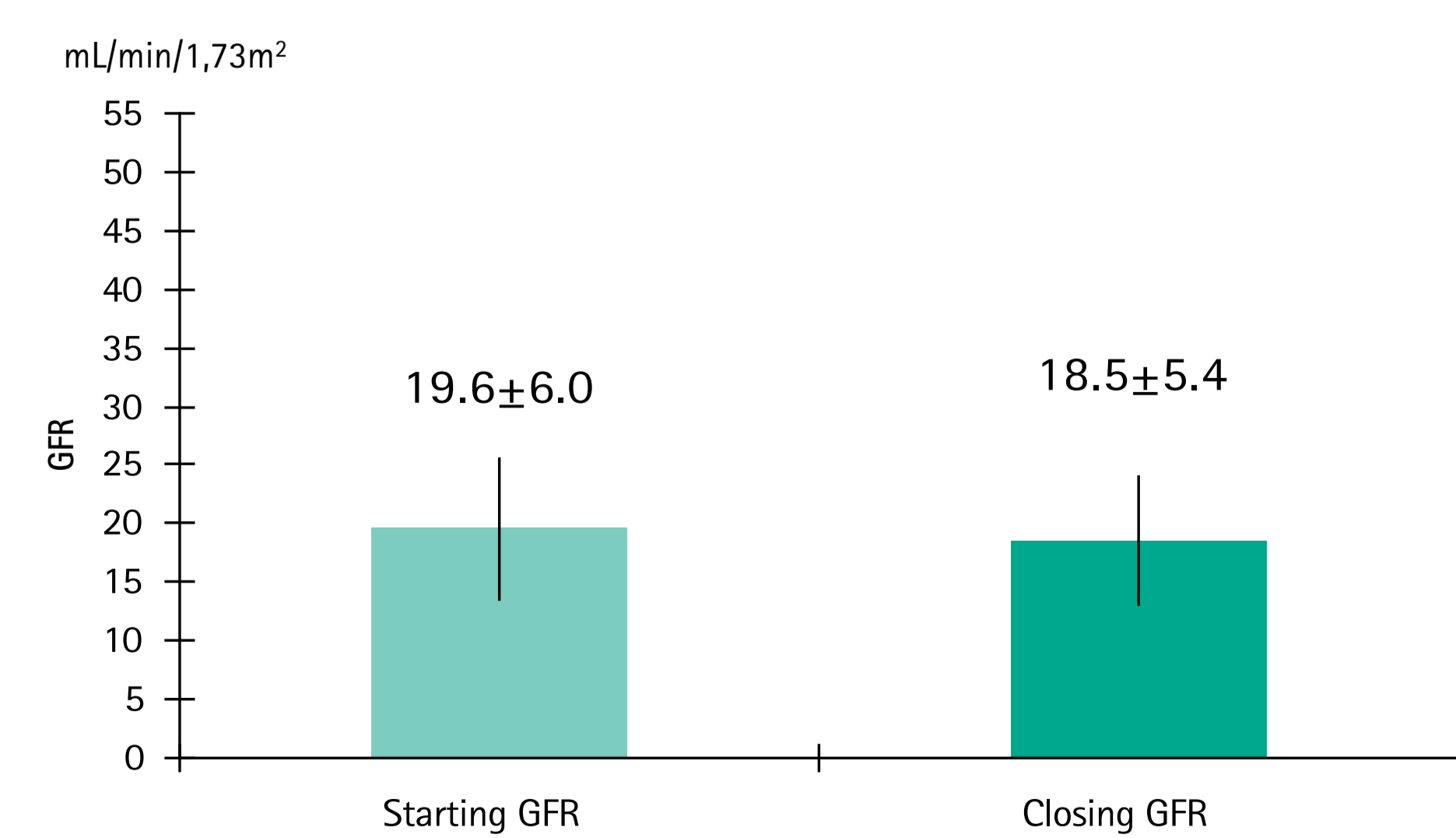
Changes in GFR



Patients under nephrological care at the end of study n=182 (23.9%)

	all pts 182 pts	≤ 65 years 44 pts 24.1%	> 65 years 138 pts 75.9%
average age at the start of care (years)	71.6±12.8	54.2±10.4	77.3±6.8
average age at the end of study (years)	75.8±12.6	59.8±11.0	80.9±6.8
average length of care time (years)	4.2±2.6	5.9±5.3	3.6±3.1
starting GFR (mL/min/1.73m ²)	19.6±6.0	16.7±3.8	19.9±8.8
closing GFR (mL/min/1.73m ²)	18.5±5.4	20.7±8.8	19.0±5.6

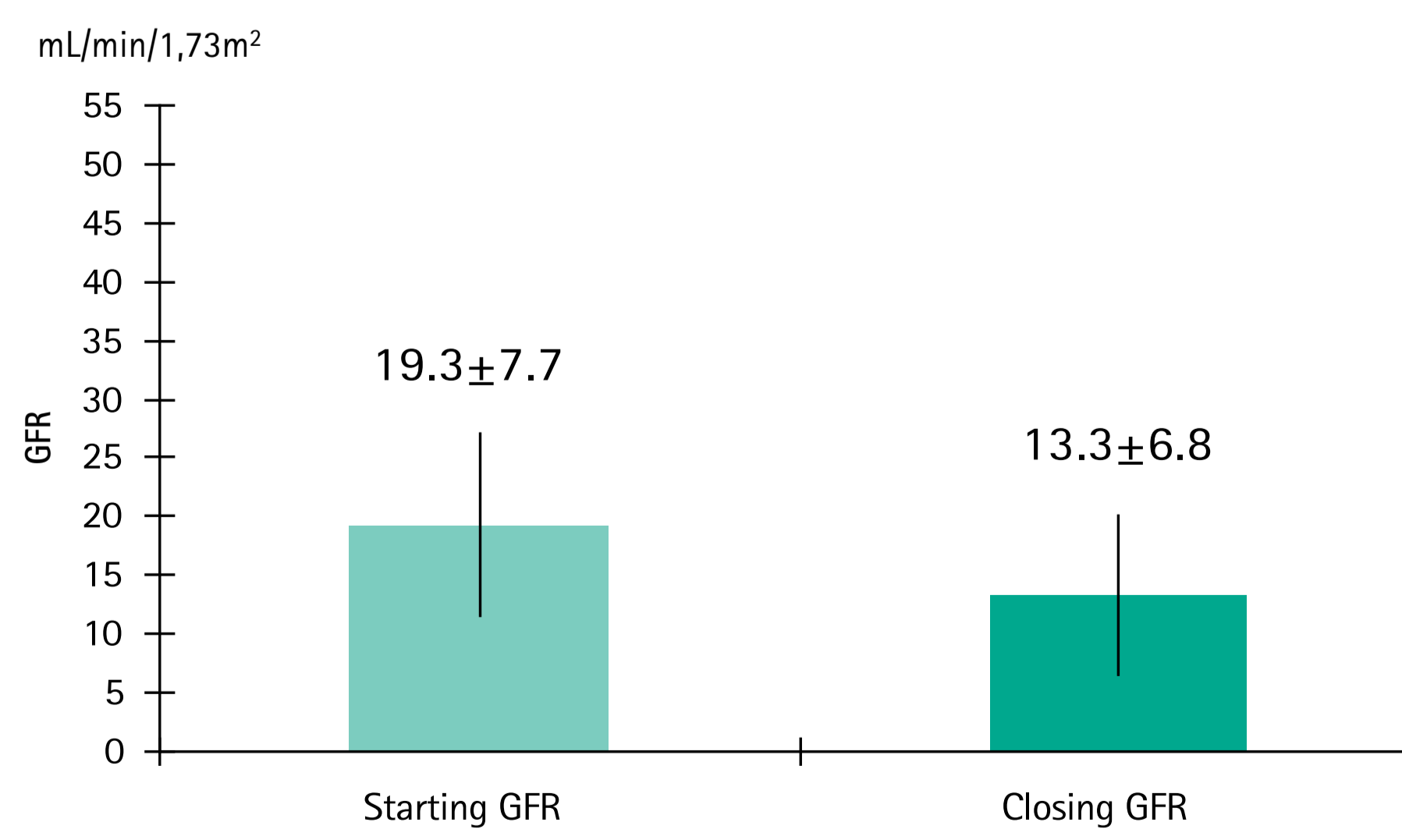
Changes in GFR



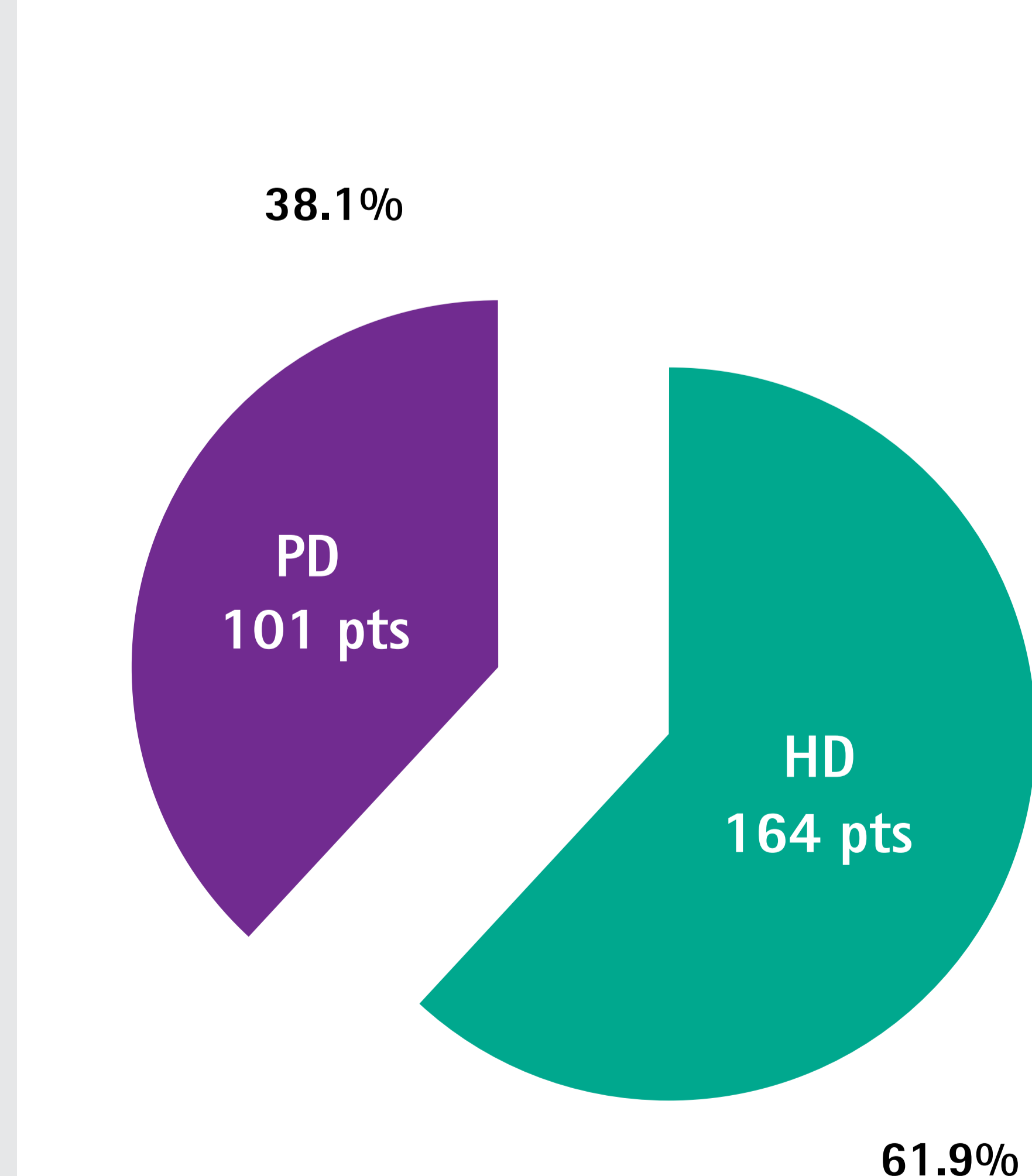
Patients underwent dialysis therapy n=265 pts (34.9%)

	all 265 pts	HD 164 pts 62%	PD 101 pts 38%
average age at the start of care (years)	62.4±14.4	65.6±12.4	57.3±15.8
average age at the start of dialysis (years)	65.4±15.4	68.7±11.7	60.1±18.7
average length of care time (years)	3.4±4.5	3.1±3.8	3.2±5.4
starting GFR (mL/min/1.73m ²)	19.3±7.7	18.7±6.5	20.1±9.2
closing GFR (mL/min/1.73m ²)	13.3±6.8	12.3±4.4	14.9±9.2

Changes in GFR



Distribution of patients transferred from nephrological care to the dialysis programme n=265 (34.9%)



CONCLUSION

- About one third of our patients with advanced chronic renal failure are in stable state over seven years.
- The rate of deceased patients was 16.7%. These patients were older and the main cause of death was cardiovascular.
- 15.9% of patients in our care disappeared from the kidney care service.
- 8.0% of the patients were referred to GP's care because their renal function improved (eGFR >30mL/min/1.73m²).
- 35.5% of patients initiated renal replacement therapies. 38% of these patients chose PD.