

observational study of two years in a nephrology unit.

Authors: Esperanza Melero Rubio,* Mateo Párraga Díaz.,* Remedios Jurado Pellicer .**
 *Hospital Clínico Universitario Virgen Arrixaca, **Hospital Molina . Murcia, Spain.

Plasmapheresis is a therapeutic modality where separates the plasma and the formed elements of blood being replaced the volume removed by plasma or albumin. This procedure is relatively safe although it has been described some complications, the incidence of death is 0.05 % but is commonly associated with the primary disease.

To show our experience whit the plasmapheresis procedure in a nephrology unit and to describe the adverse effects associated with patient safety with regard to the vascular access and hypotension.

A retrospective and observational study of all the plasmapheresis procedures made in our unit during the last two years. We reviewed the medical histories of patients and the nursing notes.

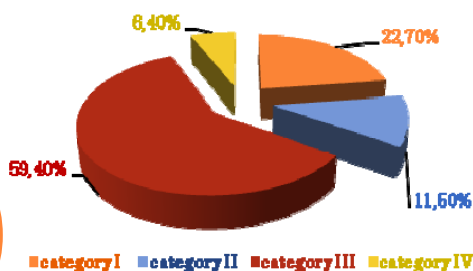


Results

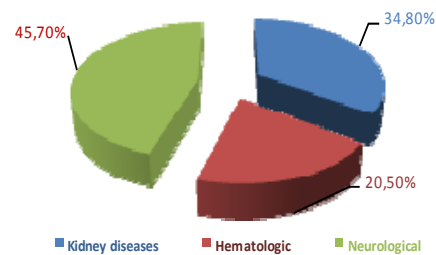
Patients	Men	Women	Age	T. Procedures	Procedure mean
n: 42	n: 16	n: 26	45 years	453	7 (2-33)

Albumin	Plasma	Anticoag. Premedication	Calcium
54.1%	45,9%	68%	55.2%

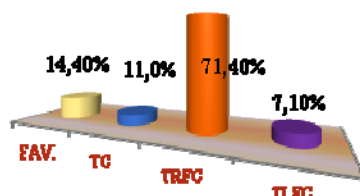
ASFA classification



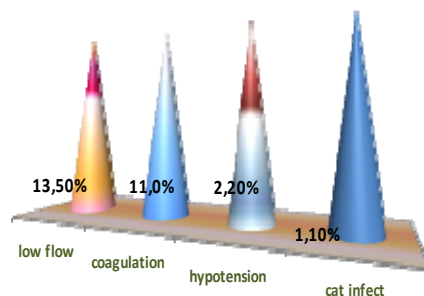
Indication of treatment



Vascular Access



Frequency of complications



Neurological diseases are the most commonly treated. The frequency of complications related to the vascular access was very low, as well as the adverse effects of infections or hypotension. Therefore, plasmapheresis is a very safe procedure for the patient.